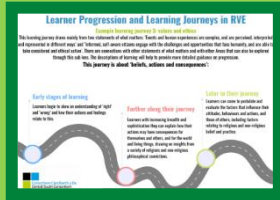


# Cycle C Design



**RVE**  
**Searching for Meaning and purpose, The Journey of Life**



**RSE**  
**Social influences; Relationships; Mental Health and Wellbeing**



**Curiosity**



**Quest**

**Enquiry and exploration; curiosity and seeking knowledge; Journeys, Discoveries.**

**Innovation**



**Innovation Generation**

**Creativity, design, eco-innovation; business; enterprise; Citizens of Wales and the World, Ideation, Invention**

**Change**



**Metamorphosis**

**Adaptation; life cycles; being ready to embrace and be the change; agency; looking closely; creation and creativity; transformation; ambition.**

## Literacy, Numeracy and Digital Competency

**Human rights education and diversity; Local, national and International contexts, Careers and work-related experiences**